



Science.
Applied to Life.™

3M™ DI-NOC™ Exterior

High-tech finish for your façade

Design. Value retention. Appearance.

Fascinating façades

It is true to say that façades are the image of any building. Age, weather and environmental conditions affect the diverse range of façade surfaces and over time often require repairs. The enduring value of the building must be preserved and protected for the long term. Aluminium, galvanised steel or painted metal façades can be quickly returned to a 'like new' condition with DI-NOC Exterior.

3M™ DI-NOC™ Exterior – High-tech, quality finish in one go

The expertise of our global development departments has been used in the creation of DI-NOC Exterior. Our self-adhesive PVC film is weather-resistant, dimensionally stable and dirt-repellent. It can be applied directly onto the smooth, clean surface without the need to dismantle the façade. The result; a refreshed, 'like new', appearance for the façade.



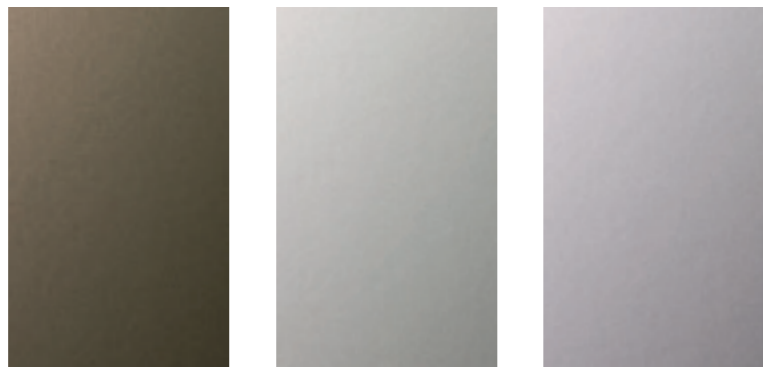
Functionality and design

3M gives you the option to design and upgrade modern façades quickly and easily, thus protecting the value of the property over time as well as its appearance. Function and design complement each other.



Cost saving

Why replace expensive façade surfaces when they can be remodelled with DI-NOC façade film at significantly reduced costs compared with conventional renovations?

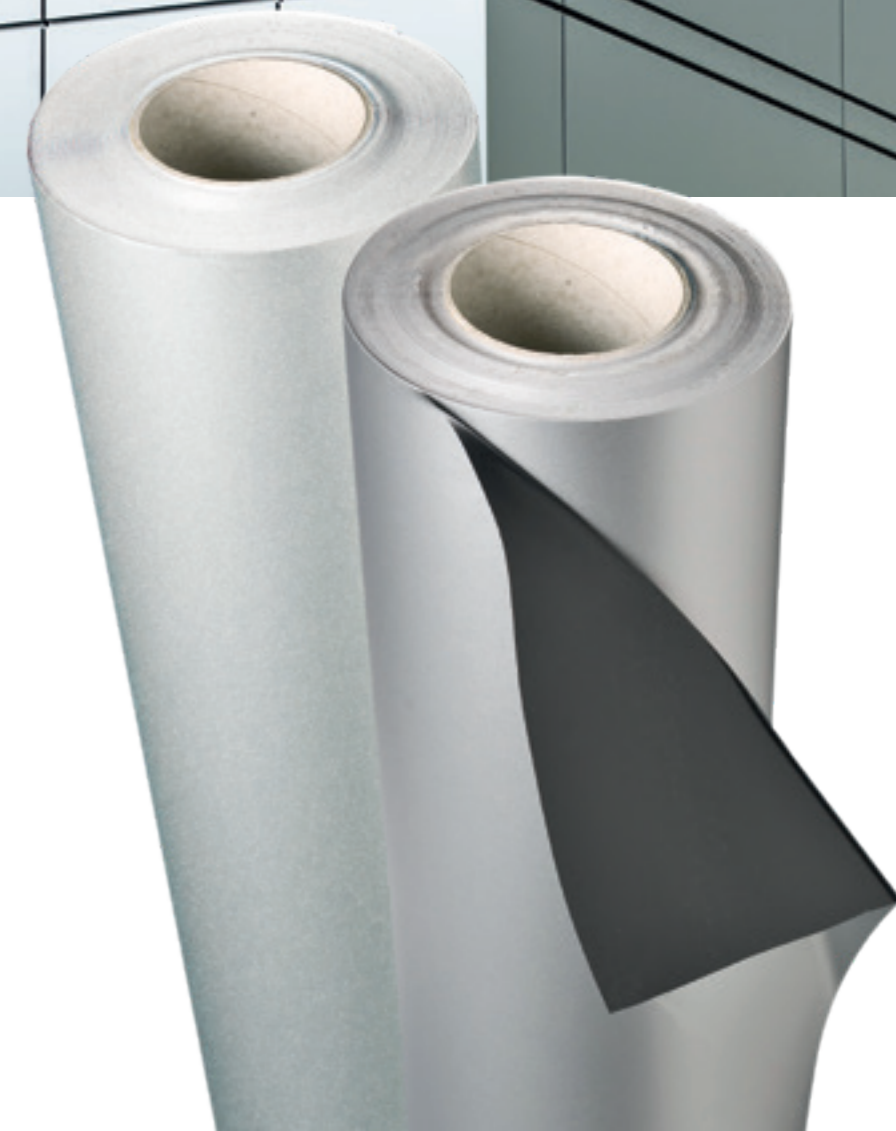


Right for your needs

The cast PVC film of DI-NOC Exterior for façades is the perfect synthesis of engineering performance and design. Thanks to the special coating, the high-quality appearance is maintained over time. This makes DI-NOC Exterior the ideal solution for building repair and redesign.

Permanently attractive

Durability means value retention. DI-NOC Exterior, applied by a trained DI-NOC installer, offers this, giving customers confidence in the long-term finish of their façade – even over a duration of 10 years for vertical surfaces.



The solution – 3M™ DI-NOC™ Exterior

Easy and quick handling

The work of the 3M-trained installer begins with inspection of the property. Here, it is decided how the DI-NOC Exterior film selected by the customer can be applied optimally to the old façade.

The films are pre-cut and sorted in the workshop according to exact measurements. This reduces waste, increases the speed of application and avoids unnecessary handling.

Optimal results require optimal preparation. To guarantee the best possible adhesion of 3M™ DI-NOC™ Exterior, the parts of the façade that will have DI-NOC Exterior applied to them must be cleaned thoroughly.



After preparation of the surfaces, the pre-cut film is applied to the existing surfaces.

No dismantling of the façade elements is required.

The light-weight film facilitates a visual refresh in virtually all areas of the façade, without compromising the static nature of the building.

The special 3M adhesive technology allows precise positioning and makes application of the film easier.

For a clean finish – whether vertically or horizontally – the 3M DI-NOC Exterior for external applications can be trimmed to size precisely on site. Final, detailed adjustments can therefore be performed quickly at any time.



Before



With 3M DI-NOC Exterior

Tried and tested 3M technology

Films for modern façade design

DI-NOC™ Exterior films are extremely durable, resilient, dimensionally stable and UV-resistant, developed especially for external decoration and modernisation of façades.

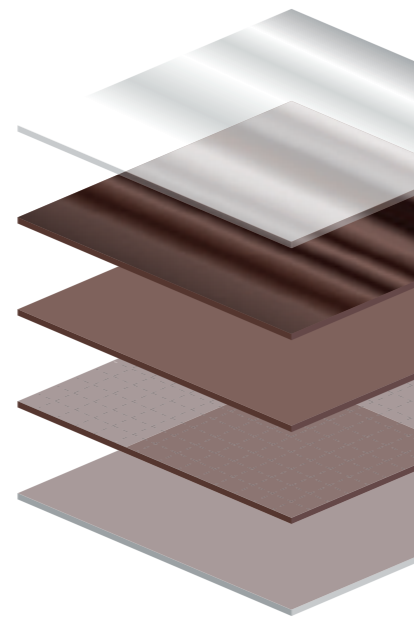
3M™ Comply™ adhesive technology

3M™ Comply™ is an adhesive technology that facilitates quick, easy and bubble-free application of film by means of air ducts in the adhesive.

Trapped air between film and base can be removed easily. This reduces the installation time and ensures a precise adhesion result for the perfect finish.

Film Construction

1. Transparent protective layer →
2. Structural layer →
3. Colour layer →
4. Adhesive →
5. Protective paper →



DI-NOC™ is supplied as a roll.

3M™ DI-NOC™ Exterior – Technical information

Product properties

- **Film:**
Cast PVC film with special dirt-repellent coating
- **Dimensions:**
Roll 1,22 m x 50 m
- **Adhesive:**
Acrylate adhesive
- **Protective paper:**
PE-coated paper
- **Adhesion temperature:**
+ 12 °C to + 38°C (base and surroundings)

Physical properties

- **Film thickness (without adhesive):**
200 µm (depending on film structure)
- **Dimensional stability:**
< 0,4 mm FTM 14
- **Adhesive strengths:**
Approx. N/25 mm FTM 1

Please follow the recommended product and handling information.

Available designs



For top-class finishes

The right planning for the perfect façade

Naturally you want the best possible finish for your façade. A detailed project plan is essential to achieve the perfect result. Together, we can address the issues that are essential for the perfect finish:

- What surface will the product be applied to and how large is the area?
- How can the façade surfaces be reached – with scaffolding or using a lifting platform?
- Is the façade open to the public during the project?
- Are power and lighting available during the project?
- What is the best way to prepare the surface?
- Is the working environment free of dust or damp?
- In which order should the application be carried out?

Professional focus for a professional finish. Visit the 3M website for more details.





Commercial Solutions Division

3M United Kingdom PLC
3M Centre, Cain Road Bracknell, Berkshire
RG12 8HT
Tel: 01344 858000
commgraphics.uk@mmm.com

Commercial Solutions Division

3M United Kingdom PLC
4th Floor Building 8
Exchange Quay, Salford Quays
Manchester M5 3EJ
Tel: 01344 857000
commgraphics.uk@mmm.com

Commercial Solutions Division

3M Ireland (Dublin)
The Iveagh Building
The Park, Carrickmines Dublin 18,
Ireland
Tel: 00 353 1 280 3555
commgraphics.uk@mmm.com

www.3M.co.uk/graphicsolutions
www.3M.co.uk/innovativefinishes
www.3M.co.uk/facilities

© 3M 2018. All rights reserved.
3M, DI-NOC, Controltac and Comply are
trademarks of the 3M company.

- 📄 3MFilmsUK
- 📄 3MFilmsUK
- 📄 3MWrapsUK
- 📄 3MWrapsUK
- 📄 3MWrapsUK